



KATHOLIEKE UNIVERSITEIT
LEUVEN

eCompetence development in the framework of Guided Independent Learning

Experiences and reflections from
the K.U.Leuven case

eDidaktik Berlin
28 August 2006



eCOMPETENCE AT K.U.LEUVEN

INTRODUCTION

A little bit of context



Founded in 1425 in the heart of Europe

www.avnet.kuleuven.be



eCOMPETENCE AT K.U.LEUVEN

INTRODUCTION

Teaching and research



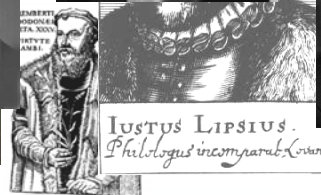
www.avnet.kuleuven.be



eCOMPETENCE AT K.U.LEUVEN

INTRODUCTION

Teaching and research



www.avnet.kuleuven.be



eCOMPETENCE AT K.U.LEUVEN

INTRODUCTION

And Teaching?



www.avnet.kuleuven.be



eCOMPETENCE AT K.U.LEUVEN

INTRODUCTION

The Metaphore: Fonske



www.avnet.kuleuven.be



eCOMPETENCE AT K.U.LEUVEN

INTRODUCTION

Goals of university teaching

- Critical scientific attitude: students should
 - assimilate discipline specific research findings and frameworks
 - acquire insight in the coming about of these findings
 - be able to acquire information independently
 - be able to contribute themselves to the development of knowledge
 - be able to use the knowledge acquired in solving new problems and in developing independent and articulated viewpoints
- Graduates should be able to take responsibility in society:
 - able to develop an articulated viewpoint in societal matters

eCOMPETENCE AT K.U.LEUVEN

INTRODUCTION

Responsibilities in university teaching

- Students'** responsibility:
 - the learning process
- Teachers'** responsibility:
 - support of students' learning process
- Organisation's** responsibility:
 - shared view on the meaning of excellence in higher education
 - faculty development** (appointment of staff, training)
 - (international) quality assurance

eCOMPETENCE AT K.U.LEUVEN

GUIDED INDEPENDENT LEARNING (GIL)

Evaluation of alternatives

- Selfinstruction, PBL, Competence oriented education ...

A deliberate choice for

- explicitation of aims and objectives
- importance of communication in a research praxis
- decision making on a faculty level
- room for characterization of programmes
- confirmation of the autonomy and the critical role of the university

→ GIL as an answer to the need for external and internal justification

eCOMPETENCE AT K.U.LEUVEN:

GUIDED INDEPENDENT LEARNING (GIL)

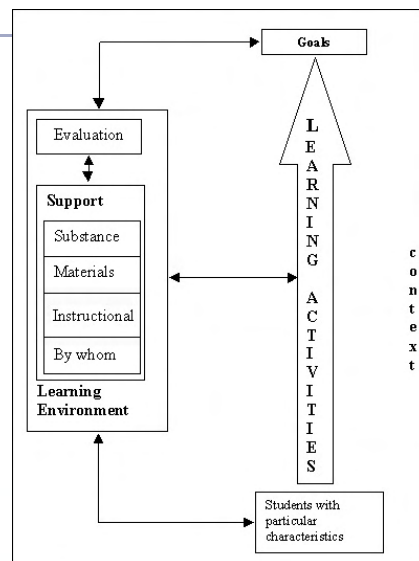
Students' responsibility: the learning process

Starting point:

- learning is an active, constructive, cumulative, goal-oriented, self-regulated, contextualised, social process

Students should

- acquire an in-depth understanding of the instructional goals
- select and engage in appropriate learning activities
- call for additional help if the learning environment provides insufficient support

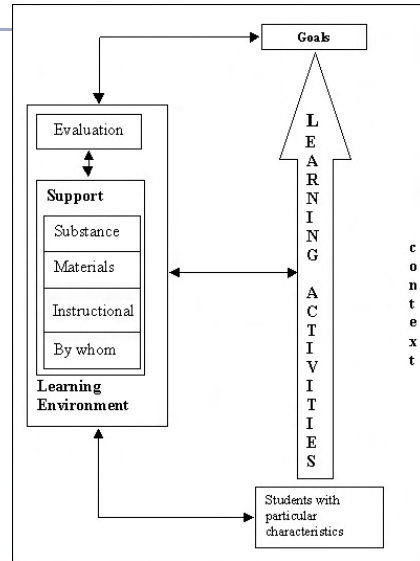


eCOMPETENCE AT K.U.LEUVEN:

GUIDED INDEPENDENT LEARNING (GIL)

Teachers' responsibility: support of students' learning process

- to define adequate goals in agreement with programme responsables
- to consistently construct an assessment approach for these goals
- to elaborate an environment that in line with GIL-principles, encourages self-regulation by providing sufficient and goal-directed support



www.avnet.kuleuven.be



eCOMPETENCE AT K.U.LEUVEN

TOLEDO

Logo

- Alcatara-bridge in Toledo
- Bridge between students and faculty



Acronym

Toetsen en **L**eren **D**oeltreffend **O**ndersteunen

Effectively supporting Testing and Learning

Aim is

to implement and support (technically and pedagogically) a digital learning environment for all students and faculty at the K.U.Leuven

www.avnet.kuleuven.be

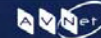


eCOMPETENCE AT K.U.LEUVEN

TOLEDO



www.avnet.kuleuven.be



eCOMPETENCE AT K.U.LEUVEN

TOLEDO

Success factors

- The **software**:
 - functional, user-friendly, reliable, scalable
- The **support**:
 - team, training, helpdesk
- The **embedding** within the university's:
 - Overall pedagogical concept
 - ICT-infrastructure in place
 - Administrative and other core business (educational) processes

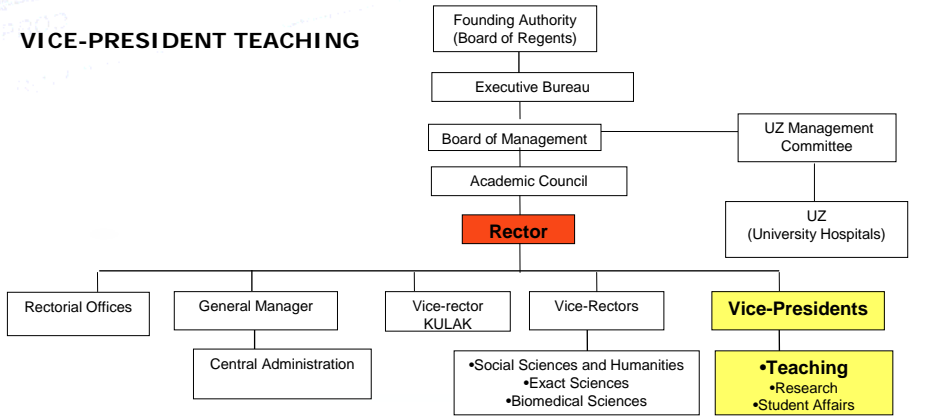
www.avnet.kuleuven.be



eCOMPETENCE AT K.U.LEUVEN

EDUCATION POLICY

VICE-PRESIDENT TEACHING



eCOMPETENCE AT K.U.LEUVEN

EDUCATION POLICY

MIXED MANAGEMENT GROUPS

ICTS board

ICT management

ICTO advisory board

Education Management

General management

Teaching staff and experts

TOLEDO

DUO/ICTO educational support service

LUDIT ICT support

AVNET support

Teaching staff

Educational support staff

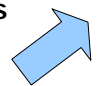
GDLO

Institutions management

Toledo representatives

Internationalisation

Think Tank



eCOMPETENCE AT K.U.LEUVEN

EDUCATION POLICY

QUALITY MANAGEMENT

•Permanent education committees

- Representatives of teachers and students
- Responsible for curricula (development) within the framework of guided independent learning

•Internal evaluation

- Systematic and periodical
- Within the specific educational reference framework

•External evaluation

- With (peer)experts from Flemish and Dutch universities
- Based on self-assessment report and on-site visit

•Educational Board

- Strategic decisions on education at the university
- Follow-up on internal and external evaluations

www.avnet.kuleuven.be



eCOMPETENCE AT K.U.LEUVEN

AVNET

OUR MISSION

an **integrated, multidisciplinary support** (mainly) for **education** at K.U.Leuven and in its Association with regard to **media, organisational, pedagogical, and technological** aspects, and particular focus on **networked e-learning** and **distance education** in an **international** context

www.avnet.kuleuven.be



AVNET

OUR VISION

Academic Expertise centre



Education support

AVNET

FOR WHOM?

- For **personnel** at K.U.Leuven
Teachers, education teams, central services, AVNet team members
- For **students** at K.U.Leuven
Regular students, doctoral students, trainees, working students
- For the **Association** K.U.Leuven
Students, teaching staff, managers

eCOMPETENCE AT K.U.LEUVEN

AVNET

OUR THREE-TIER SUPPORT MODEL

1. We stimulate teachers (students) to produce AV/MM or other e-learning projects on their own: focus on simple and cheap solutions.
2. We offer teachers (students) advice and facilities (for free) at AVNet to work on their own with professional tools and our infrastructure.
3. We make it for you (not completely for free).

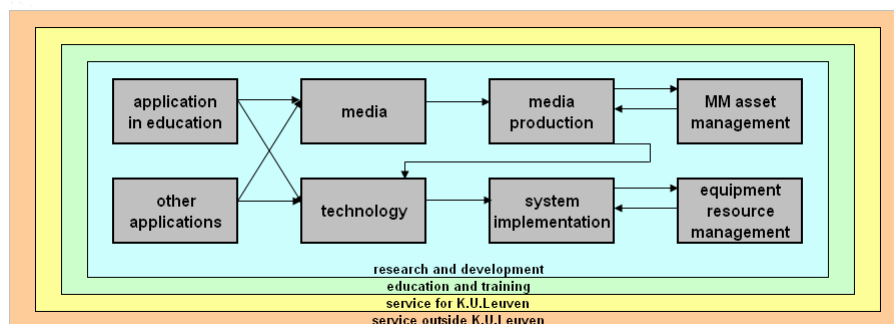
www.avnet.kuleuven.be



eCOMPETENCE AT K.U.LEUVEN

AVNET

OUR WORKFLOW



www.avnet.kuleuven.be



eCOMPETENCE AT K.U.LEUVEN

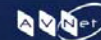
AVNET

OUR INFRASTRUCTURE

- video studio
- audio studio
- 6 video editing suites
- multi camera production facilities
- videoconferencing (ISDN en IP) and interaction room
- streaming media server
- documentation and information centre
- AV rental service



www.avnet.kuleuven.be



eCOMPETENCE AT K.U.LEUVEN

AVNET

OUR RESOURCES

- **+35 team members (with contract)**
 - + pool of working students, trainees, freelancers
- **central** financing (operations + infrastructure)
- **partial** financing by commissioners
 - 100% out-of-pocket cost +
 - 25% of personnel cost and infrastructure
- **project** finances
 - Flemish government
 - European Commission

www.avnet.kuleuven.be



eCOMPETENCE AT K.U.LEUVEN

AVNET

OUR TEAM



www.avnet.kuleuven.be



eCOMPETENCE AT K.U.LEUVEN

AVNET

OUR EXPERTISE

Through:

- Interactive MM production work
- Experiments and pilots with MM and NET
- Research, development and implementation projects
- Collaboration with other centers and departments
- Networking and representation
- Education and training
- Internships for students
- Knowledge sharing

www.avnet.kuleuven.be



eCOMPETENCE AT K.U.LEUVEN

AVNET

OUR TRAINING

For whom?

Aimed at different target groups:

- New faculty members
- Teaching assistants
- Members of educational innovation teams
- Faculty members at large
- Students
- Partners (Association K.U.Leuven, development cooperation,...)

www.avnet.kuleuven.be



eCOMPETENCE AT K.U.LEUVEN

AVNET

OUR TRAINING

Training offer

- Courses:
 - AV/MM in Toledo (for K.U.Leuven)
 - Informatics and media (for dentists)
 - Video production (for communication sciences)
 - Multimedia Production Management (for UNZI)
 - Webworkability (for K.H.Leuven international exchange students)
- Study counseling Open University
- Internships
 - For Flemish and international students with different backgrounds
- ...



www.avnet.kuleuven.be



eCOMPETENCE AT K.U.LEUVEN

AVNET

OUR TRAINING

Training offer (cont.)

- ...
- Training:
 - AV/MM in Toledo (for K.U.Leuven)
 - Use of editing suites (for K.U.Leuven)
 - Use of AV/MM equipment in lecture halls (for K.U.Leuven)
 - Development of audiovisual learning materials (for Vlir)
 - Videoconferencing (for the Association)
 - Mediatraining (for K.U.Leuven)
- Seminars



www.avnet.kuleuven.be



eCOMPETENCE AT K.U.LEUVEN

AVNET

OUR TRAINING

Impact on development of eCompetence

- Part of overall **professional e-competence development** for university teaching staff (assessment, creditation?) and students
- Systematic **reflection** by teachers (and teaching staff) on their own **educational practice**
- **Peer-learning** leads to **communities of practice**
- Systematic **reflection** by AVNet on our **own support services** and **own expertise**

www.avnet.kuleuven.be



eCOMPETENCE AT K.U.LEUVEN

AVNET

OUR TRAINING

The future

- More modular approach (from basics to advanced topics)
- Better mix of hands-on and theoretical sessions
- More collaboration with other training providers (within & outside K.U.Leuven)
- Intensive training program (internships incl. integrated project work)
- Towards 'train-the-trainer' sessions

www.avnet.kuleuven.be



eCOMPETENCE AT K.U.LEUVEN

AVNET

CONTACT DETAILS

More information?

- Link: <http://www.avnet.kuleuven.be/en/>
- Mail: info@avnet.kuleuven.be
- Call: +32-16-32.82.00
- Fax: +32-16-32.82.70
- Visit: Kapeldreef 62, 3001 Heverlee

www.avnet.kuleuven.be

